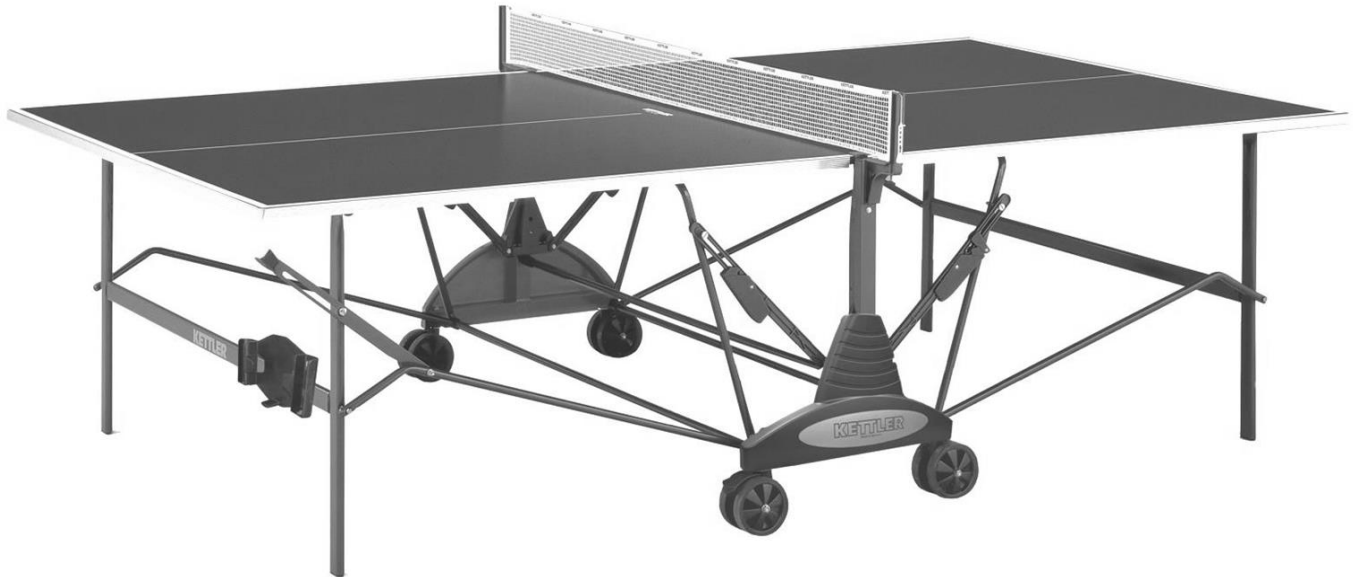


# KETTLER®

## Stockholm GT Table Tennis Table Model 7162-490/890 & 7122-490/890

Adult Assembly Required

Made in Germany



Picture Similar

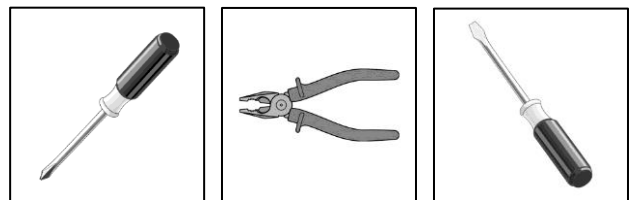
KETTLER® International, Inc. ● 1355 London Bridge Road ● Virginia Beach, VA 23453 USA  
[www.kettlerusa.com](http://www.kettlerusa.com)  
[info@kettlerusa.com](mailto:info@kettlerusa.com)

Please do not return this product to the store. Contact KETTLER® for parts and service: call toll free 866.804.0440 or send email to [parts@kettlerusa.com](mailto:parts@kettlerusa.com).



Please visit our website [www.kettlerusa.com](http://www.kettlerusa.com) to view a video demonstration of product assembly or scan the QR Code above.

Tools needed; not included



## Before Assembly

Before assembling or using the table tennis table, please read the following instructions carefully. They contain important information for use and maintenance of the equipment as well as for your personal safety. Keep these instructions in a safe place for maintenance purposes or for ordering spare parts.

All KETTLER® products are designed in accordance with the latest safety regulations and undergo a constant process of quality control during manufacturing. The knowledge gained in this process is used to constantly improve and develop our products. In order to offer our customers the very best in product quality, we reserve the right to make technical changes at any time. In spite of this, should you have any cause for complaint, please contact KETTLER®.

### Note on Safety

- The table tennis table should be used only for its intended purpose, i.e. for playing with suitable table tennis racquets and balls.
- All other uses are prohibited and may be dangerous. The manufacturer cannot be held liable for damage or injury caused by improper use of the table.
- Damage or worn components may endanger your safety or shorten the lifespan of the table tennis table. Replace worn or damaged components immediately and remove the table from use until this has been done. Use only spare parts manufactured by KETTLER®.
- The table tennis table complies with all safety regulations. Incorrect repairs, alterations to the design (removal of original parts, addition of other components etc.) may endanger the safety of the user.
- Instruct other persons (in particular children) using the table in its correct use, and draw their attention to any potential source of danger, especially when setting up or dismantling the table.
- Caution: During assembly, keep all items out of children's reach (choking hazard – contains small parts).
- When setting up or dismantling the table, stay clear of its folding radius.
- When folded up, the table tennis table presents a large surface to the wind. For this reason, ensure that it is stored in a sheltered position.
- The table tennis table may be pushed only in the transport position otherwise there is a risk of injury.
- The unit complies with the standard EN 4468-1:2004.
- Regularly check all screws, bolts, etc. to ensure they are in good condition.
- Warning: Children should not attempt to fold/unfold table. May result in injury

### Handling the Equipment

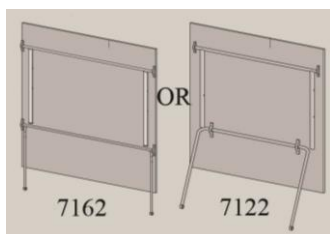
- Do not use the table tennis table until it has been fully and correctly assembled and checked.
- Ensure that indoor table tennis tables are not exposed to dampness or rain. Keep them well away from direct sources of heat. Should the surface become warped, lay the table on a level surface for a few days.
- Set the table up on a level surface.
- Do not cover it with a tarp, which can result in condensation forming. We recommend the weatherproof KETTLER® cover, part number 7032-900. Cover should only be used when table is in folded position.
- For practicing without a partner, the table halves can be folded up individually.
- Do not use corrosive or abrasive materials to clean the equipment. Ensure that such materials are not allowed to pollute the environment. In most cases, a slightly dampened cloth is sufficient.
- Waste Disposal: KETTLER® products are recyclable. At the end of its useful life, please dispose of correctly and safely complying with your local facilities and guidelines.
- Store table in folded position when not in use.

## Before Assembly (continued)

### General Assembly Instructions

- The equipment must be assembled with care by two adults.
- Separate all the parts including the hardware. Compare quantities with the package contents section and that all items are undamaged. If there are any problems, please contact KETTLER®.
- Before assembling the equipment, study the drawings and photos carefully then assemble in the order shown.
- Please note that there is always a danger of injury when working with tools or doing manual work. Therefore, please be careful during assembly.
- Ensure that your working area is free of possible sources of danger, for example don't leave any tools lying around. Always dispose of packaging material in such a way that it may not cause any danger. There is always a risk of suffocation if children play with plastic bags!
- The fastening items required for each assembly step are shown at the beginning of the step. Use the fastening items exactly as instructed.
- Bolt all the parts together loosely at first, and check that they have been assembled correctly. Then use spanner for final tightening. Then check that all screw connections have been tightened firmly.
- For technical reasons, we reserve the right to carry out preliminary assembly work (e.g. addition of tubing plugs).
- Please keep original packaging, so that it may be used for transport at a later date, if necessary. Goods may only be returned after prior arrangement and in packaging that is safe for transportation (in the original box if possible). It is important to provide a detailed defect description/damage report.

### Package Contents



Number Included - 2



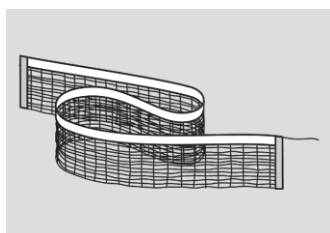
Number Incl – 4 locking



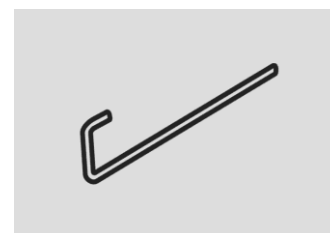
Number Incl – 4 non locking



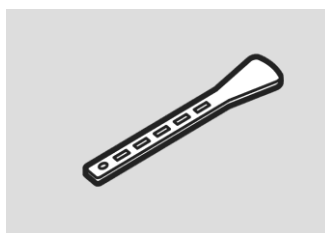
Number Included - 2



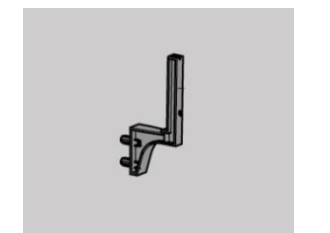
Number Included - 1



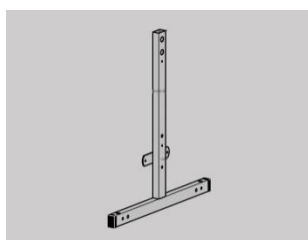
Number Included - 2



Number Included - 2



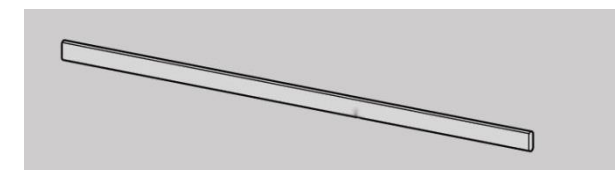
Number Included - 2



Number Included - 2

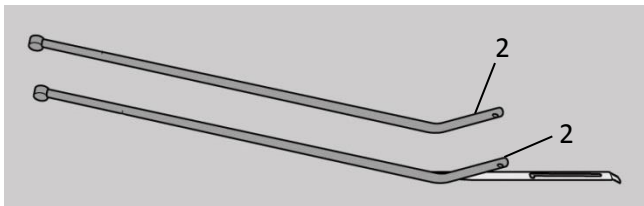


Number Included - 3

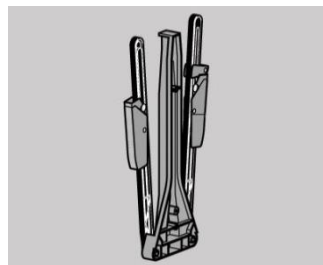


Number Included - 2

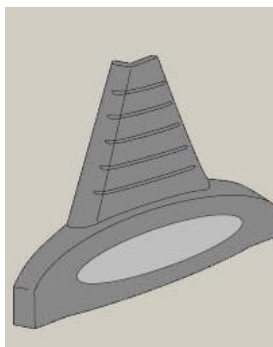
## Package Contents (continued)



Number Included – 2 of each



Number Included - 2



Number Included - 2



Number Included - 6

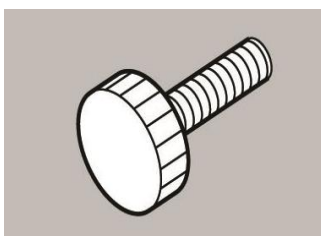


Number Included - 2

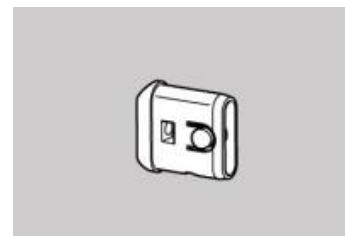


Number Included - 2

Tool included  
Not shown at  
actual size



Number Included - 2



Number Included - 4

Items below are shown at actual size



Number Included – 4  
m8x125



Number Included – 4  
m8x110



Number Included – 4  
m6x100



Number Included – 6  
m8x60



Number Included – 6  
3.9x13



Number Included – 4  
m6x49



Number Included – 2  
m6x58

## Package Contents (continued)

Items below are shown at actual size



Number Incl – 8  
m8



Number Incl – 6  
m6



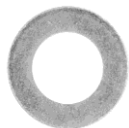
Number Incl – 4  
m6x3mm



End view and side view shown  
Number Incl – 4  
m6x5mm



Number Incl – 10  
dia 25x8



Number Incl – 24  
dia 16x8



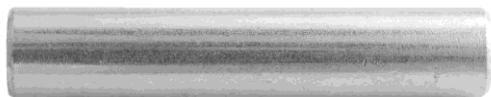
Number Incl – 8  
dia 12x6



Number Incl – 4  
dia 12x5



Number Incl – 2



Number Incl – 4



Number Incl – 4  
m6



End view and side view shown  
Number Incl – 4  
m12x6x15



Number Incl – 4



Number Incl – 4  
m12x6x3



Number Incl – 2



Number Incl – 4  
m5 locking



Number Included – 4  
m6x45



Number Included – 4  
m5x65

## Assembly

Begin the assembly of your table by carefully removing the plastic wrap and all of the loose contents. Separate the two table tops by removing the four plastic corner protectors and the plastic side strips.

### Step 1



2 Required



2 Required



2 Required

Align footlock with stemtube.

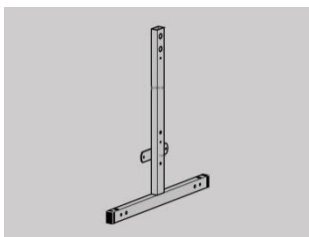
Insert drift pin. There are two footlocks and stemtubes. Assemble both as shown.





# Assembly

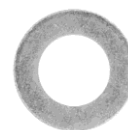
## Step 2



Install stemtubes to wheelbases as shown.  
Begin by installing locking stemtube to wheelbase (A-H)  
Repeat for non-locking stemtube as shown in I.



4 Required  
dia 25x8



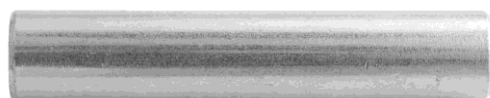
8 Required  
dia 16x8



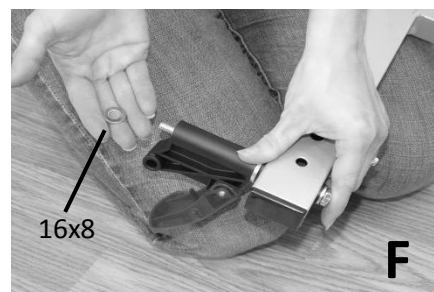
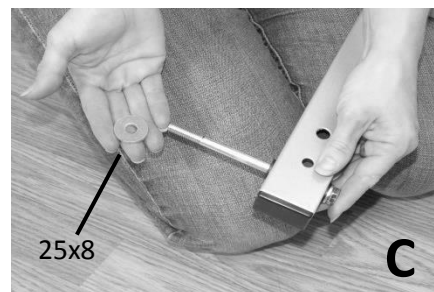
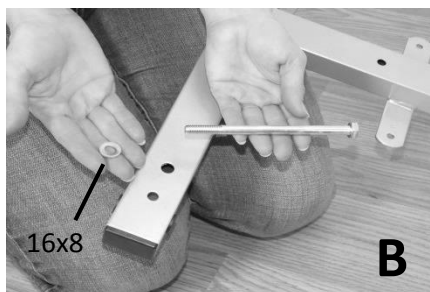
4 Required  
m8x125



4 Required  
m8



4 Required



## Assembly

### Step 3



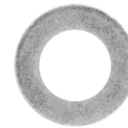
Install non-locking wheels.  
Do not over torque; wheels should roll smoothly.  
Install non-locking wheels on both wheelbase assemblies.



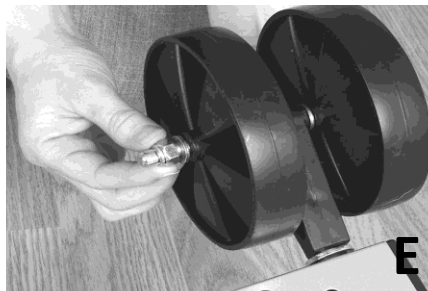
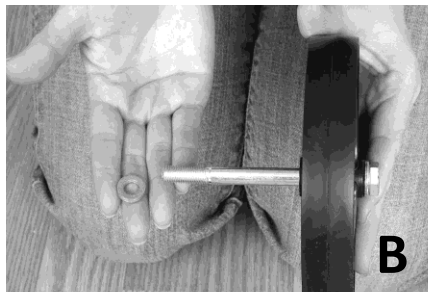
2 Required  
m8x110



2 Required  
m8



8 Required  
dia 16x8





## Assembly

### Step 4



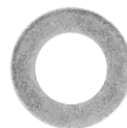
Install locking wheels.  
The grooves of the wheels should face inward.  
Do not over torque; wheels should roll smoothly.  
Install locking wheels on both wheelbase assemblies.



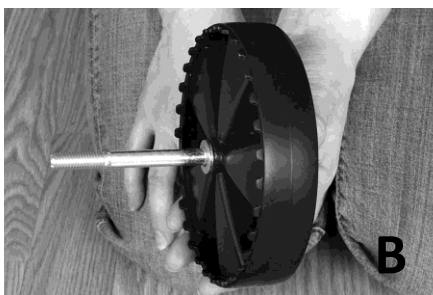
2 Required  
m8x110



2 Required  
m8

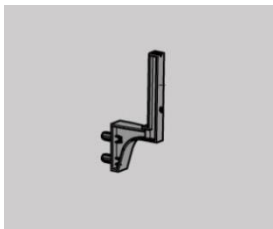


8 Required  
dia 16x8



# Assembly

## Step 5



Assemble net posts as shown.



4 Required  
m6x3mm

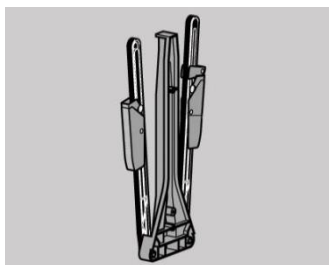


4 Required  
m6x45



# Assembly

## Step 6



Install H-pads to alignment strut (A-F).  
Insert nut into strut (G-J).  
Secure strut to wheelbase (K-U).  
Repeat for opposite side.



4 Required



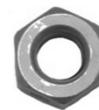
4 Required  
dia 12x5



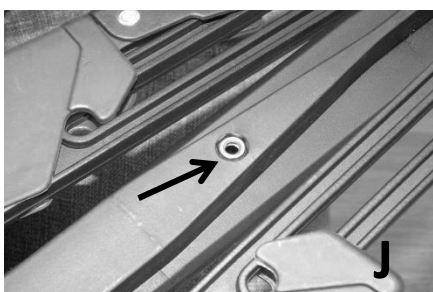
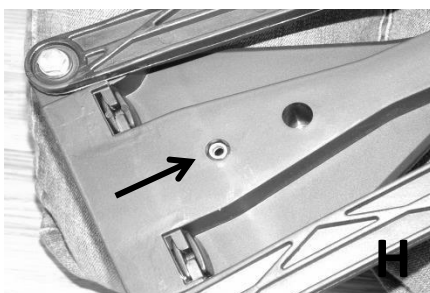
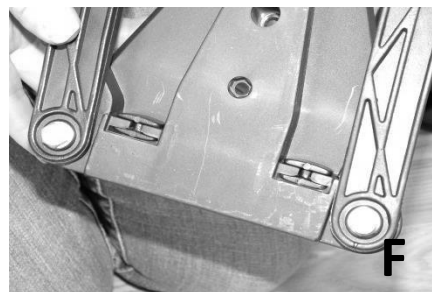
4 Required  
m5x65



4 Required  
m5 locking

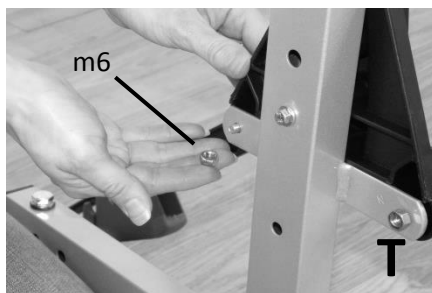
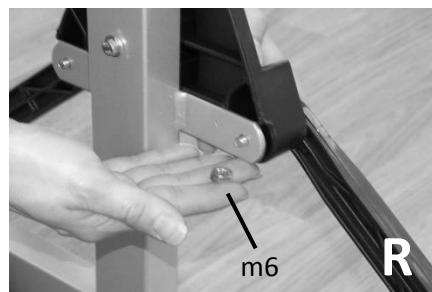
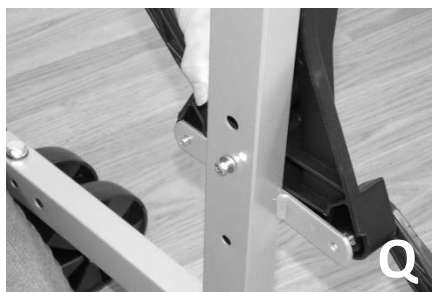
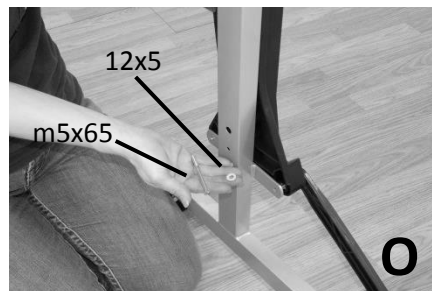
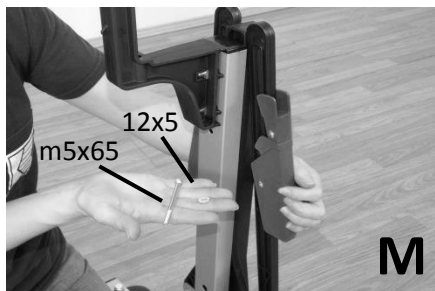


4 Required  
m6



## Assembly

### Step 6 (continued)





## Assembly

### Step 7

Lock wheels.



### Step 8



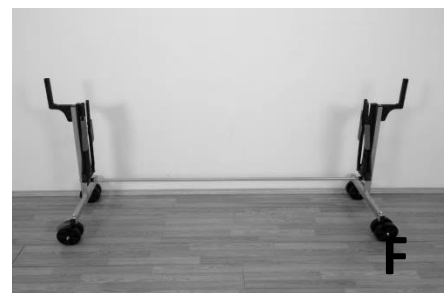
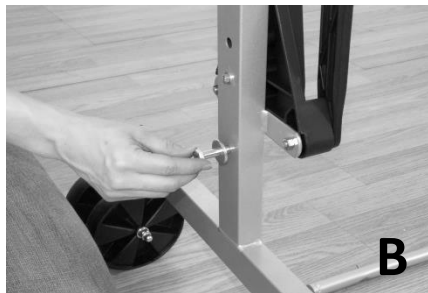
Bolt Crossbar to Wheelbases as shown.  
Upon completing Step 8, assembly should match F.



2 Required  
dia 25x8



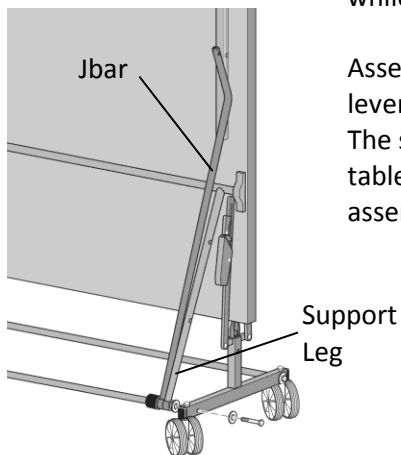
2 Required  
m8x60



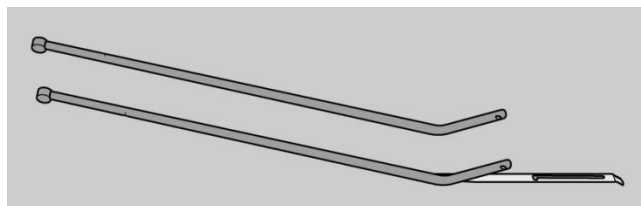
## Assembly

### Step 9

Important: Have two people complete Steps 9-13. With assistance, lift one table top onto the wheelbase; the legs will be facing outward. Have one person support the top while it is resting on the base while the other person completes assembly.



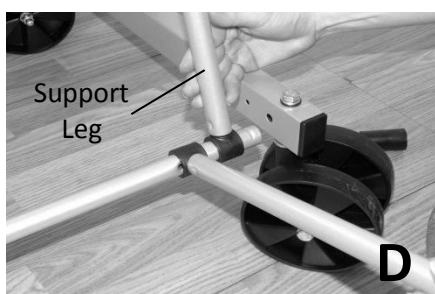
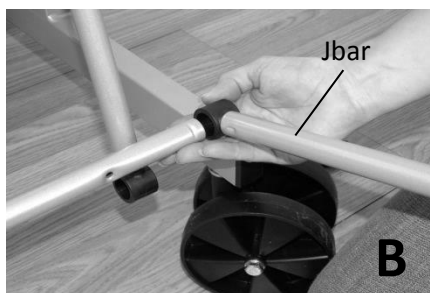
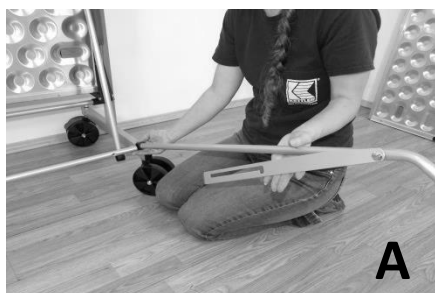
Assemble crossbar to Jbars and support leg in the order shown. Note: a Jbar with safety lever should be assembled on the right side) and a Jbar without lever on the left side. The support leg is always assembled closest to the wheelbase. You may need to lower table slightly to line up the bolt holes. Do not fully tighten the bolts until both ends are assembled.



2 Required  
m8x60



2 Required  
dia 25x8

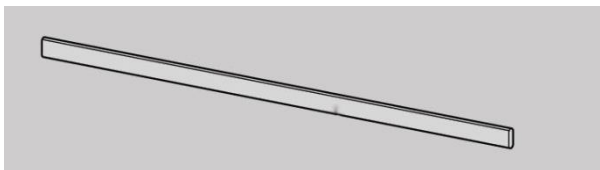
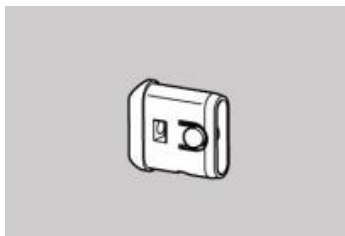




## Assembly

### Step 10

Install plug into crossbar as shown.



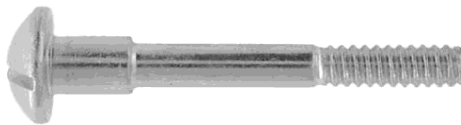
End view and side view shown  
2 Required  
m6x5mm



## Assembly

### Step 11

Raise safety lever up straight. Bolt the safety lever to leg.



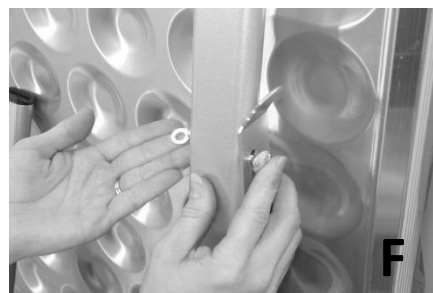
1 Required  
m6x58



2 Required  
dia 12x6



1 Required  
m6



## Assembly

### Step 12

Bolt the Jbars to leg.



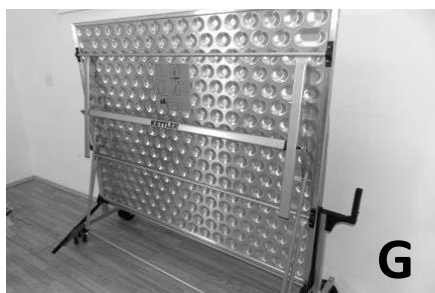
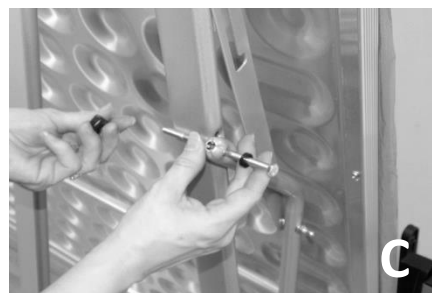
2 Required  
m12x6x3



End view and side view shown  
2 Required  
m12x6x15



2 Required  
m6x100



## Assembly

### Step 13

Bolt locking struts to support leg. Repeat for left side of top as shown in H.



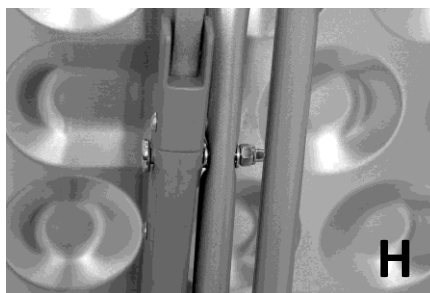
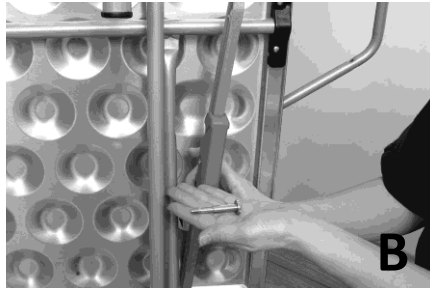
2 Required  
m6x49



2 Required  
dia 12x6



2 Required  
m6



Carry out steps 9-13  
again for the other side.

## Assembly

### Step 14

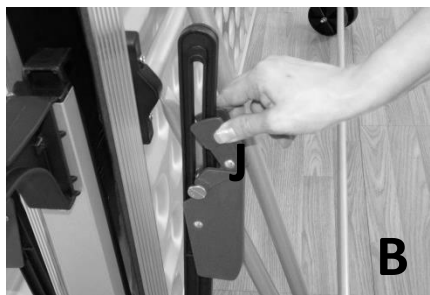


Install handgrips as shown.



### Open Table Top to Complete Assembly

To properly open table into playing position: lock wheels. Push the thumb latch down on the locking strut. Squeeze the strut on the right side and lower table into playing position. Support the table as you lower it; never allow it to drop down.



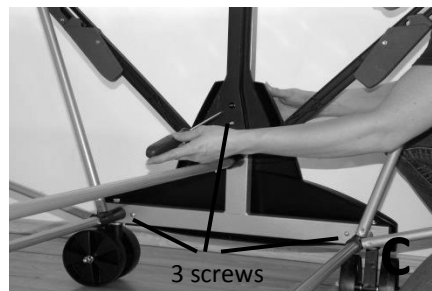
## Assembly

### Step 15



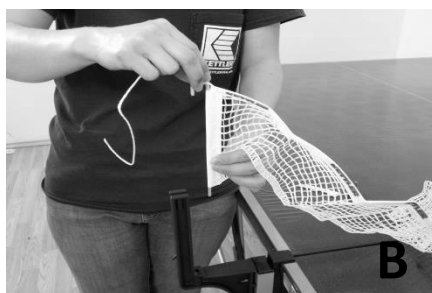
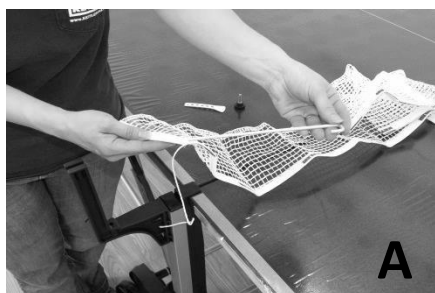
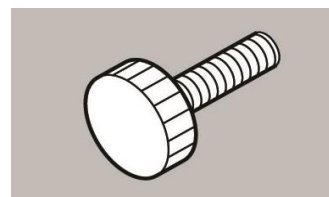
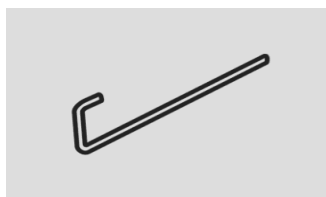
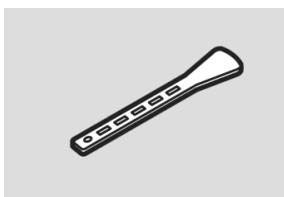
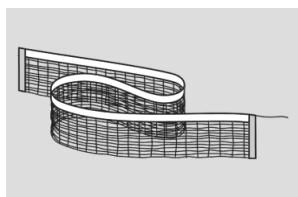
6 Required  
3.9x13

Screw sideshroud into place. Repeat installation of the second shroud on opposite side of wheelbase assembly.



### Net Assembly

Slide Jpin through net (A, B). Place Jpin in designated slots (C). Tie string to tension tab (D). Place string in slots over Jpin and net post. Adjust net tension by adjusting tension tab (E). Screw Adjuster into underside of net post (F, G).





## Assembly

### Remove Film



Remove protective plastic film from table surface.

### Folding Table

To properly fold the table, lock wheels, unlock the net post, press the safety lever up and lift top. Once the top is halfway up you can release lever and continue to fold the top.



### Racquet and Ball Holder Assembly



## Limited Warranty

**THERE ARE NO WARRANTIES, EXPRESSED OR IMPLIED, MADE BY EITHER THE DISTRIBUTOR OR THE MANUFACTURER ON KETTLER® PRODUCTS, EXCEPT THE MANUFACTURER'S LIMITED WARRANTY AGAINST DEFECTS IN MATERIAL SET OUT BELOW:**

This KETTLER® Limited Warranty applies to products sold through the KETTLER® Authorized Dealer Network to the original retail purchaser and authenticated by proof of purchase from a retailer located in the United States. Any shipments made under this warranty will be shipped to the United States only. Any shipment outside of the United States will be at the sole cost of the customer. This KETTLER® Limited Warranty is a manufacturer's warranty and is not changed or modified by additional warranties extended by individual retailers at the point of sale. Manufacturer warrants this product to be free from defects in material at the time of the product's tender of delivery for a period of 3 years for residential use. This Limited Warranty is not transferable and does not cover normal wear and tear (including, but not limited to, damage and wear to tires, power shocks, drive belts and other non-durable parts). The liability of the manufacturer under this Limited Warranty shall not include any liability for direct, indirect, or consequential damages resulting from the defect. This Limited Warranty is void if the product is damaged by accident, unreasonable use, improper service, failure to follow instructions provided, modification from its original state, or other causes determined not arising out of defects in material.

This warranty gives you specific legal rights. Should this product become defective due to material within the warranty period, contact KETTLER® Parts & Service Dept. by phone at 866.804.0440, fax at 757.563.9273, or email at [parts@kettlerusa.com](mailto:parts@kettlerusa.com).

**THIS LIMITED WARRANTY IS EXPRESSLY IN LIEU OF ANY OTHER WARRANTIES, EXPRESSED OR IMPLIED, INCLUDING ANY IMPLIED WARRANTY OF MERCHANTABILITY OR FITNESS FOR A PARTICULAR PURPOSE, AND OF ANY OTHER OBLIGATIONS OR LIABILITY ON THE PART OF THE MANUFACTURER. KETTLER® NEITHER ASSUMES NOR AUTHORIZES ANY OTHER PERSON TO ASSUME FOR IT ANY OTHER LIABILITY IN CONNECTION WITH SUCH PRODUCTS.**

## Limited Warranty

### Ordering Spare Parts

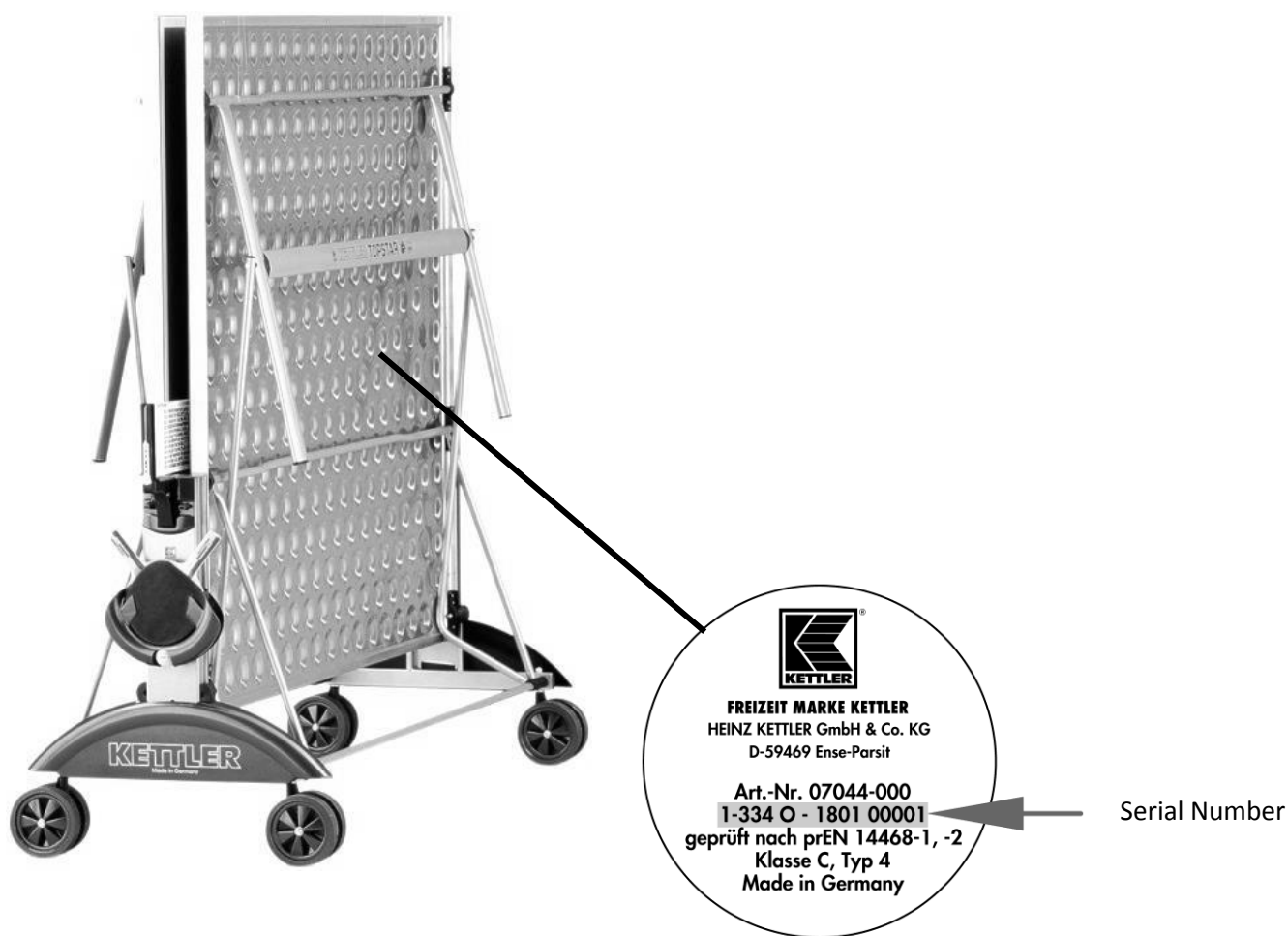
When ordering spare parts, always state the full model number, spare part number, the quantity required and the serial number.

**Example order:** Model 7136-500/ spare part number 70130761/ qty 1/ serial number ...

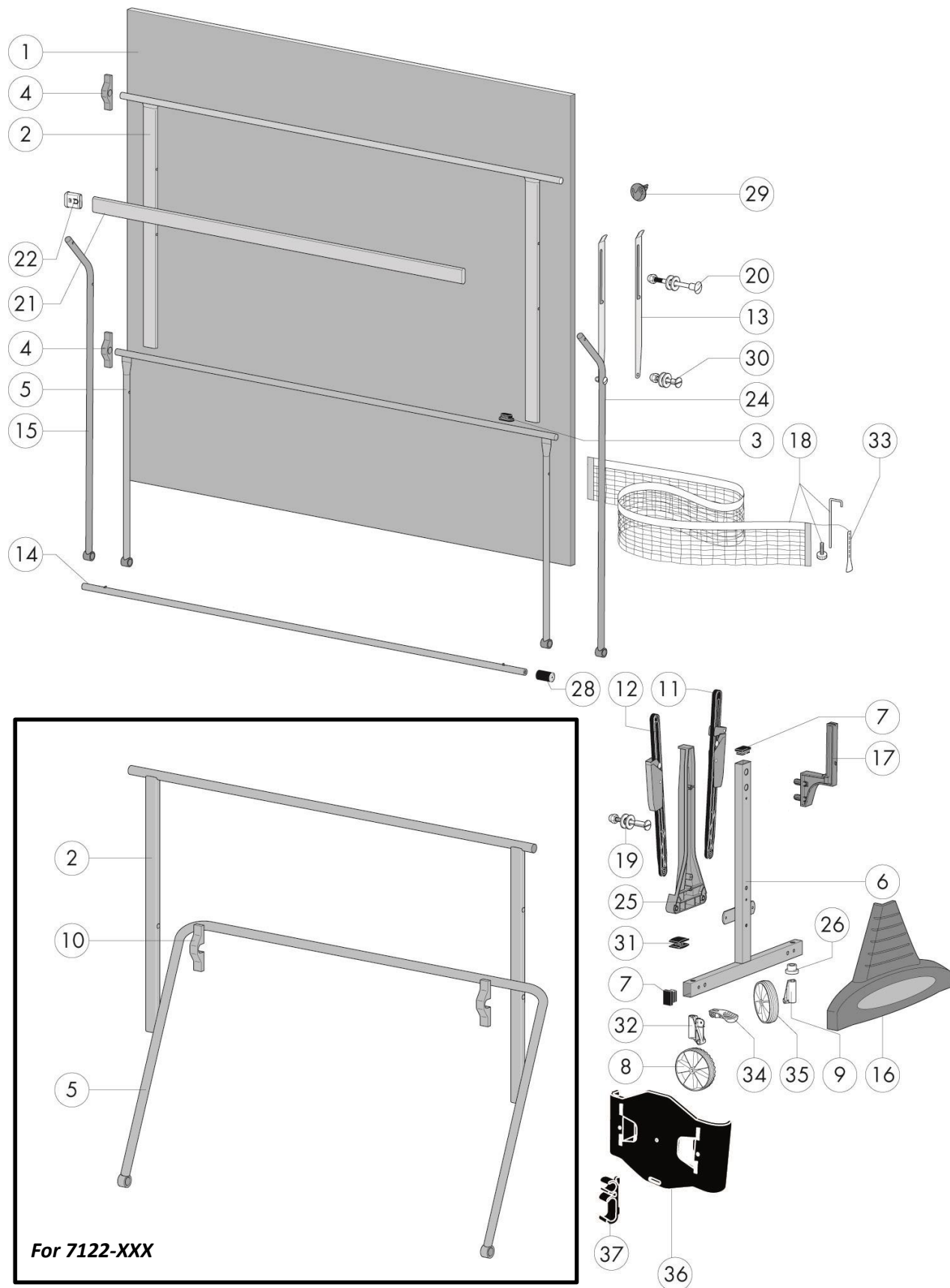
**Important:** Spare part prices do not include fastening materials; if fastening material (bolts, nuts, washers, etc.) is required, this should be clearly stated on the order by adding the words **"with fastening material"**.

**Contact:** KETTLER® International Inc., 1355 London Bridge Road, Virginia Beach, VA 23453 USA

Online: [www.kettlerusa.com](http://www.kettlerusa.com) • E-mail: [info@kettlerusa.com](mailto:info@kettlerusa.com) • For parts/service: call 866-804-0440 or email [parts@kettlerusa.com](mailto:parts@kettlerusa.com)



## Spare Parts



## Spare Parts

Number	Description	Number Required	Spare Part Number for 7122-XXX	Spare Part Number for 7162-XXX
			Indoor	Outdoor
1	Top (-490)	2	94130000	94130003
1	Top (-890)	2	94130117	94130058
2	Leg	2	94111114	94111122
3	Footcap	4	10100062	10100062
4	Clamp (indoor only)	4	10128024	
4	Clamp (outdoor only)	8		10128024
5	Support Leg	2	94110732	94110742
6	Wheelbase	2	94111121	94111121
7	Endcap	6	10100009	10100009
8	Wheel (locking)	4	70130761	70130761
9	Stemtube (non-locking)	2	70130812	70130812
10	Clamp (indoor only)	4	94110192	
11	Locking strut with thumb latch	2	94110959	94110959
12	Locking strut without thumb latch	2	94110960	94110960
13	Safety Lever	2	94111120	94111120
14	Crossbar (round)	3	94110712	94110712
15	Jbar	2	94110891	94110891
16	Side shroud	2	70130987	70130987
17	Netpost	2	94111388	94111388
18	Net	1	94180128	94180128
19	Shoulder Bolt m6x49	4	10201205	10201205
20	Shoulder Bolt m6x58	2	10201210	10201210
21	Crossbar	2	94111116	94111116
22	Plug	4	70130832	70130832
23	Hardware Bag	1	94180151	94180151
24	Jbar with Safety Lever hole	2	94111119	94111119
25	Alignment Strut	2	70130601	70130601
26	Bushing	8	10116011	10116011
28	Spacer Sleeve	6	70130525	70130525
29	Handgrip	2	70130532	70130532
30	Shoulder Bolt m6x30	2	10201208	10201208
31	Hpad	1		94180145
32	Stemtube (locking)	2	70130815	70130815
33	Tension tab	2	10128002	10128002
34	Foot lock	2	70130816	70130816
35	Wheel (non-locking)	4	70130762	70130762
36	Ball and racquet holder	1	70130562	70130562
37	Clamp	2	70130568	70130568



©2013 KETTLER® All rights reserved. No part of this manual may be reproduced, stored in a retrieval system, or transmitted in any form, or by any means, such as electronic, mechanical, or by any means, without the prior written permission of Kettler International Inc.

**KETTLER®** International Inc.,  
 1355 London Bridge Road,  
 Virginia Beach, VA 23453 USA  
[www.kettlerusa.com](http://www.kettlerusa.com) • E-mail: [info@kettlerusa.com](mailto:info@kettlerusa.com)  
 For parts/service: call 866-804-0440 or e-mail  
[parts@kettlerusa.com](mailto:parts@kettlerusa.com)

Docu 07.27.13